

Third of Birch to be thinned and replanted with 30 x *Alnus glutinosa*

Thin and underplant in first planting season following commencement

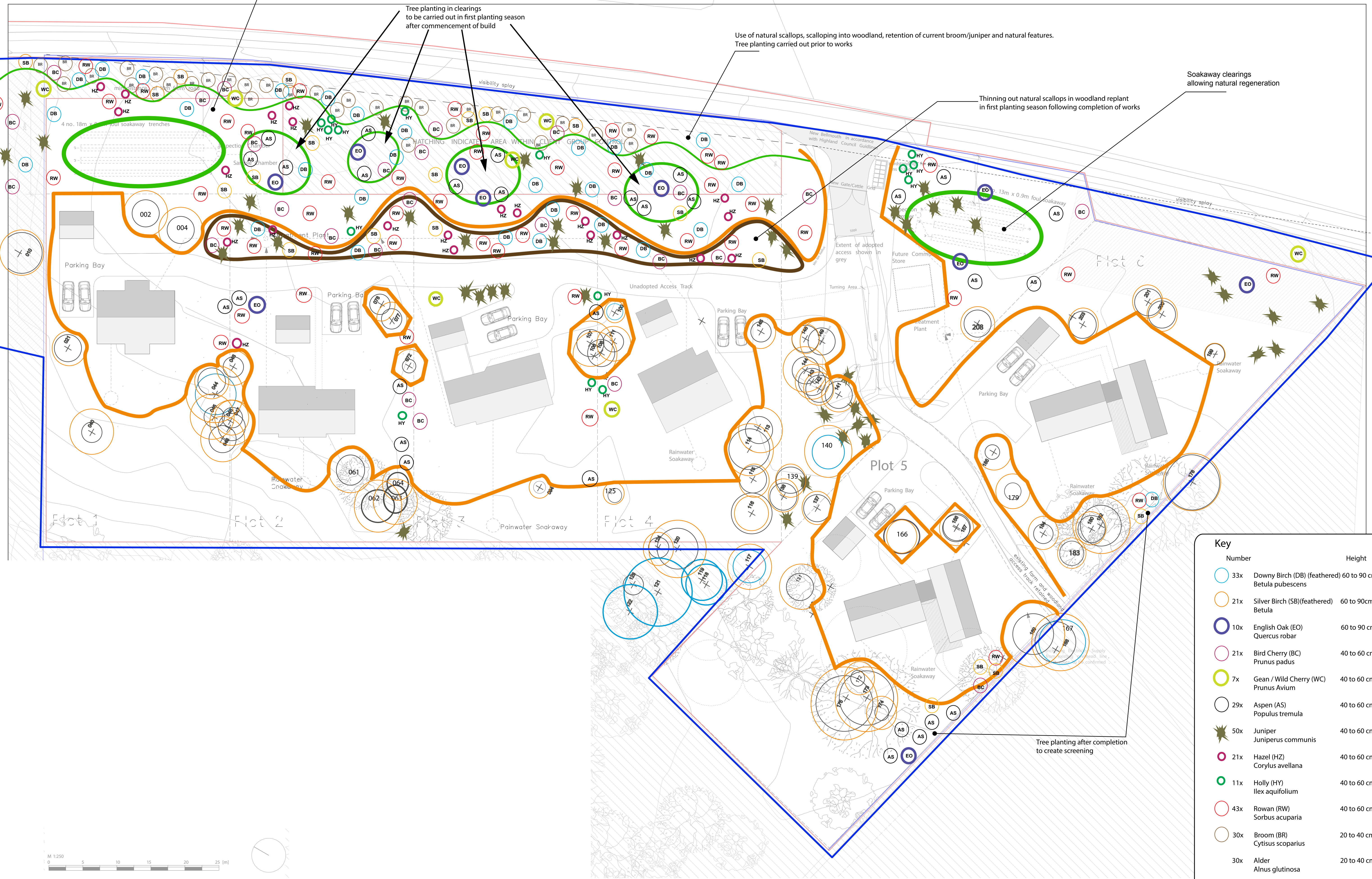
Tree planting in clearings to be carried out in first planting season after commencement of build

Use of natural scallops, scalloping into woodland, retention of current broom/juniper and natural features. Tree planting carried out prior to works

Thinning out natural scallops in woodland replant in first planting season following completion of works

Soakaway clearings allowing natural regeneration

Tree planting after completion to create screening



Key	
Number	Height
33x	Downy Birch (DB) (feathered) 60 to 90 cm
21x	Silver Birch (SB) (feathered) 60 to 90cm
10x	English Oak (EO) 60 to 90 cm plug
21x	Bird Cherry (BC) Quercus robur 40 to 60 cm plug
7x	Gean / Wild Cherry (WC) Prunus Avium 40 to 60 cm plug
29x	Aspen (AS) Populus tremula 40 to 60 cm plug
50x	Juniper Juniperus communis 40 to 60 cm plug
21x	Hazel (HZ) Corylus avellana 40 to 60 cm plug
11x	Holly (HY) Ilex aquifolium 40 to 60 cm plug
43x	Rowan (RW) Sorbus acuparia 40 to 60 cm plug
30x	Broom (BR) Cytisus scoparius 20 to 40 cm plug
30x	Alder Alnus glutinosa 20 to 40 cm plug